

# Black Hills Power – ACC's

## NS2 History and Re-bundle Plans - Gillette Wyoming



D. Silbaugh ACC Users 2019



WYG2 WYG3

WYODAK

NS1

WYG1

NS2



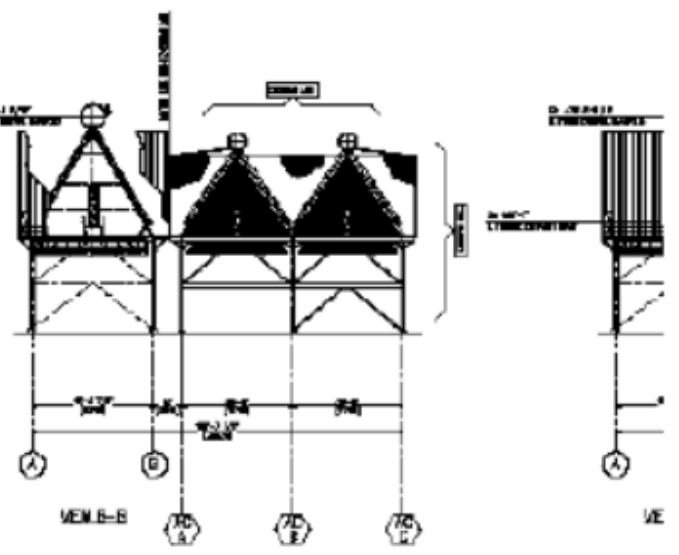
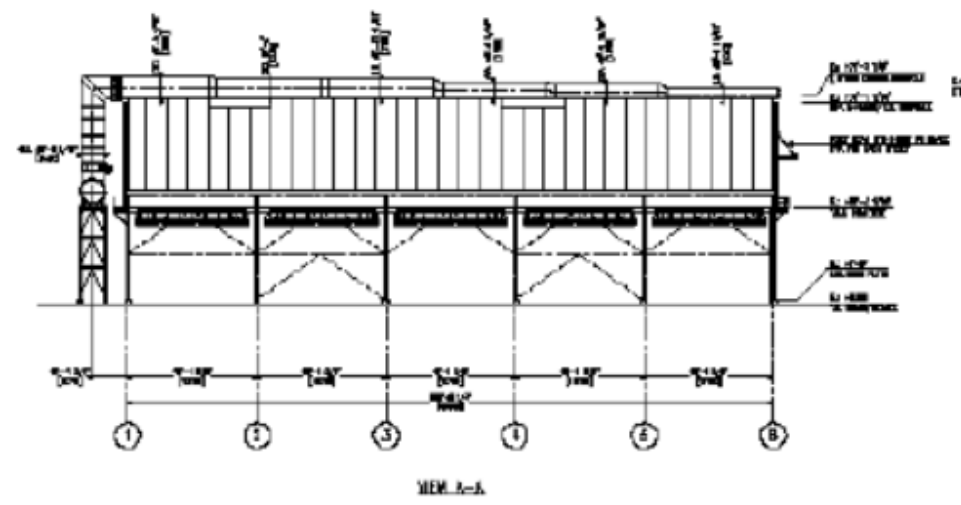
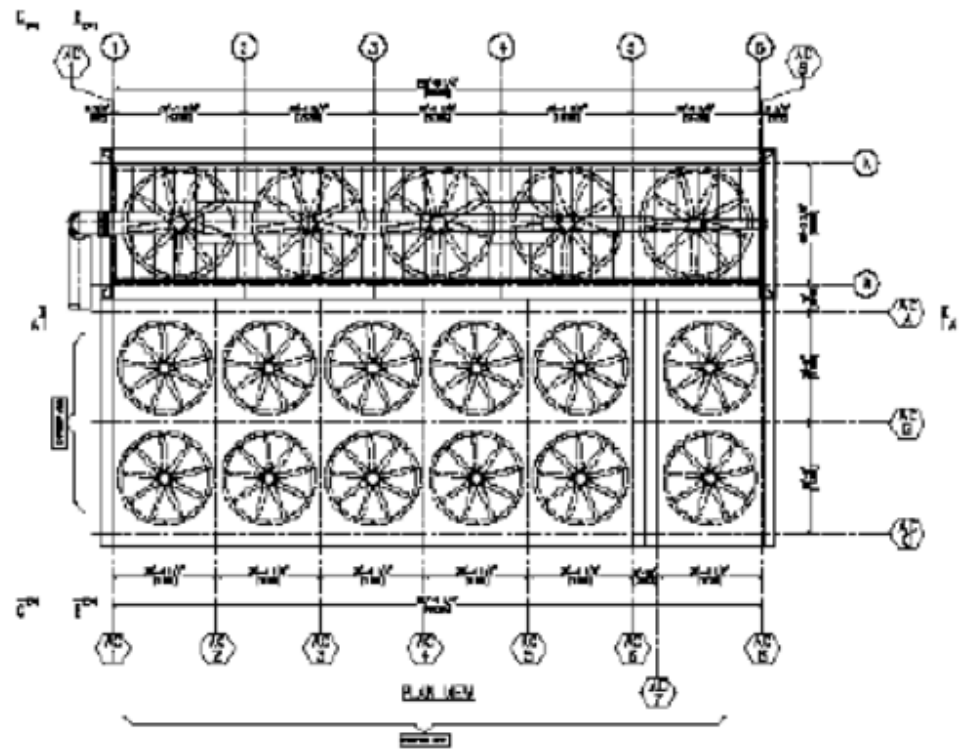
# NSC ACC Design



	<u>Make Fans</u>		<u>HP</u>	<u>CCT Vol</u>	<u>Surface Area</u>	<u>Heat Rejection</u>	<u>Rated Conditions</u>
NSII Original w/ Peakers w/ 3 <sup>rd</sup> St	GEA	10	2000	20,750 gal	2,169,150 sqft	521.1 mmBtu/hr (152MW)	6.0 inHgA @ 72F
	GEA	12	2400		2,602,908 sqft	?	?
	SPX	17	3650		4,686,241 sqft	?	?
Wygen I Original w/ Peakers w/ 3 <sup>rd</sup> st	GEA	10	2000	20,750 gal	2,169,150 sqft	521.1 mmBtu/hr (152MW)	6.0 inHgA @ 72F
	GEA	12	2400		2,602,980 sqft	?	?
	SPX	17	3650		4,686,241 sqft	?	?
Wygen II	GEA	15	3000	20,750 gal	4,652,000 sqft	521.1 mmBtu/hr (152MW)	5.0 inHgA @ 92F
Wygen III	SPX	18	4500	20,700 gal	7,500,000 sqft	550.3 mmBtu/hr (160MW)	3.5 inHgA @ 92F

## Neil Simpson 2

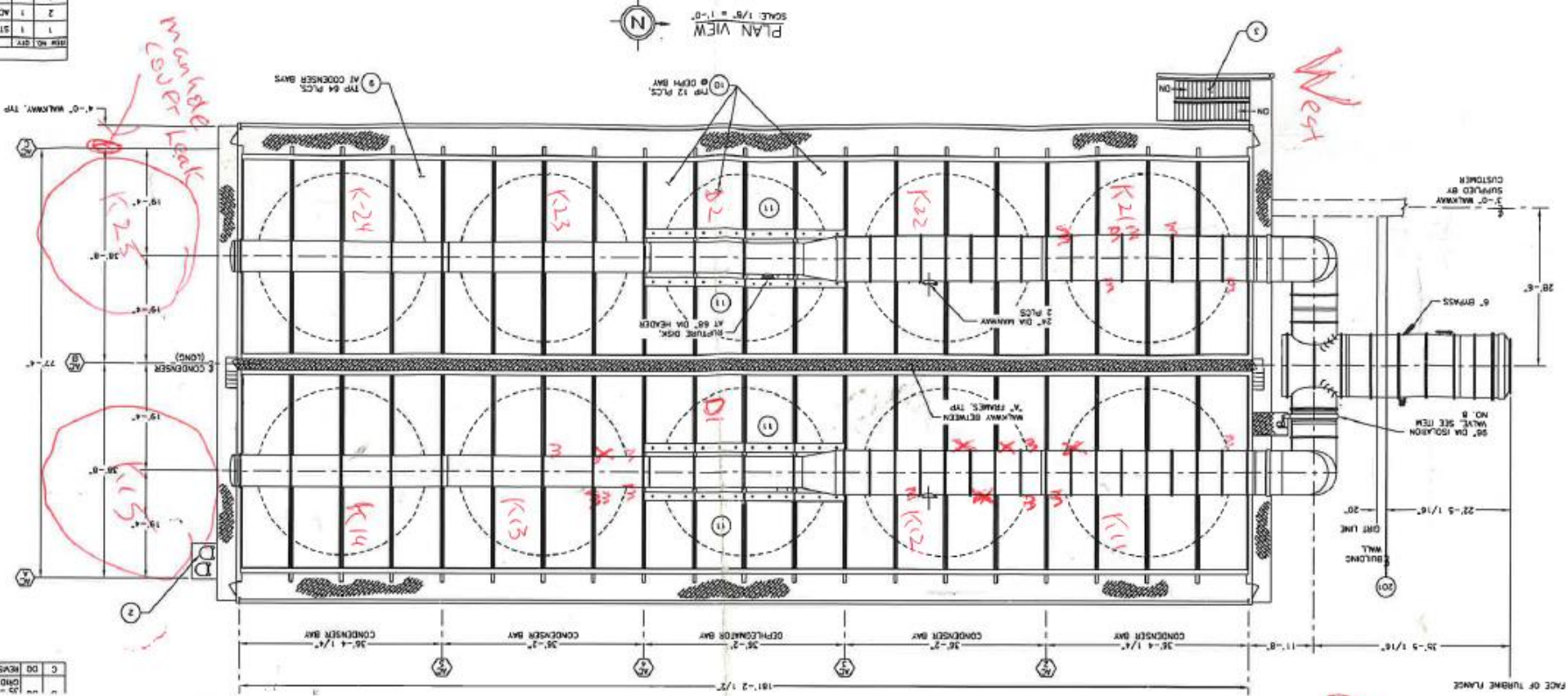




GENERAL	
1	SECTION A-A
2	SECTION B-B
3	SECTION C-C
4	SECTION D-D
5	SECTION E-E
6	SECTION F-F
7	SECTION G-G
8	SECTION H-H
9	SECTION I-I
10	SECTION J-J
11	SECTION K-K
12	SECTION L-L

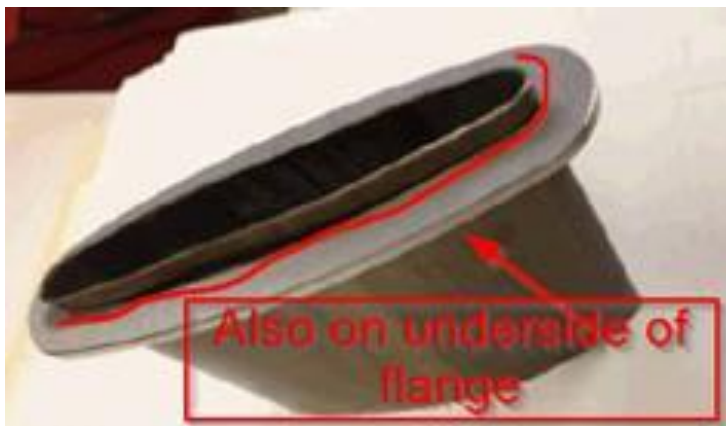
3	1	ACCESS STA
2	1	ACCESS LAD
1	1	STEEL STRU
0	0	REV NO. REV

C	00	REVISED DRAWING
00	00	000 201
00	00	00-00 1/10



M = minor scale  
 helium leak  
 X = significant/major  
 helium leak  
 Final Map  
 3/09/2008



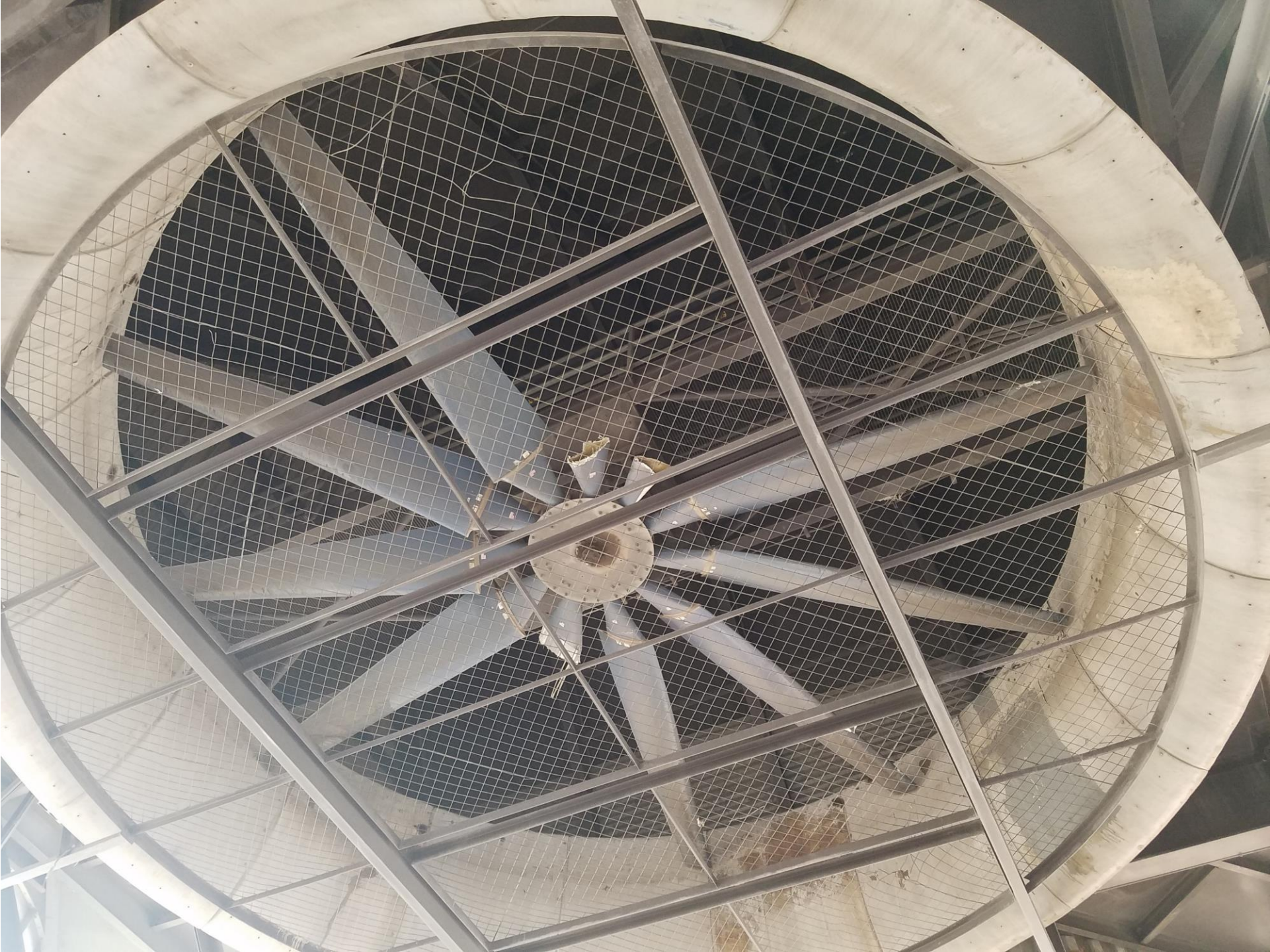


Sleeves Installed by Conco  
2017 & Re-installed 2019 (Higher  
Temp RTV)



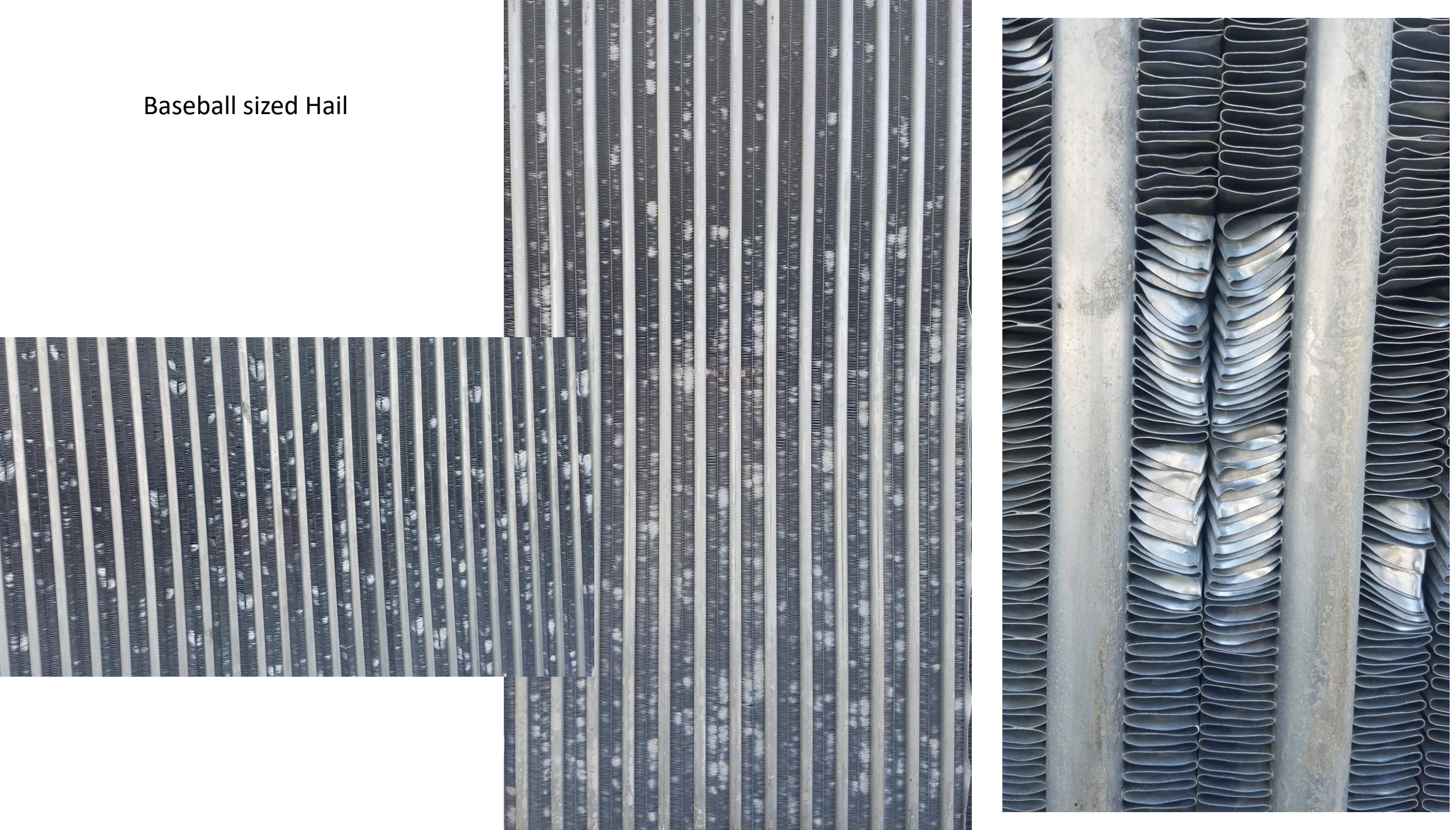








Baseball sized Hail





Contractor parking  
material overflow

NSC  
O&M

NSC Admin

2  
streets  
upgrade