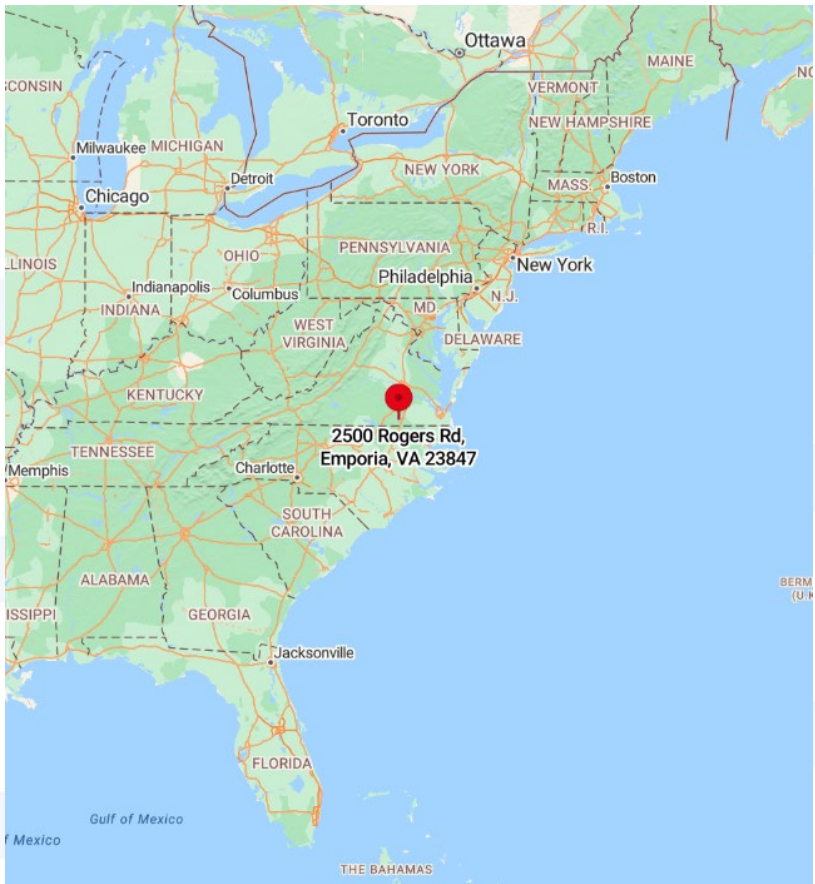


# Greenville County Power Station ACC Tour 6/22/23

Jeff Petrillo

[jeffrey.t.petrillo@dominionenergy.com](mailto:jeffrey.t.petrillo@dominionenergy.com)



# **GCPS Summary**

**Combined Cycle 1680 MW – 400,000+ homes**

**Went Commercial Dec 2018 - \$1.3 Billion**

**3 Mitsubishi 501J Gas Turbines**

**1 Alstom/GE Steam Turbine**

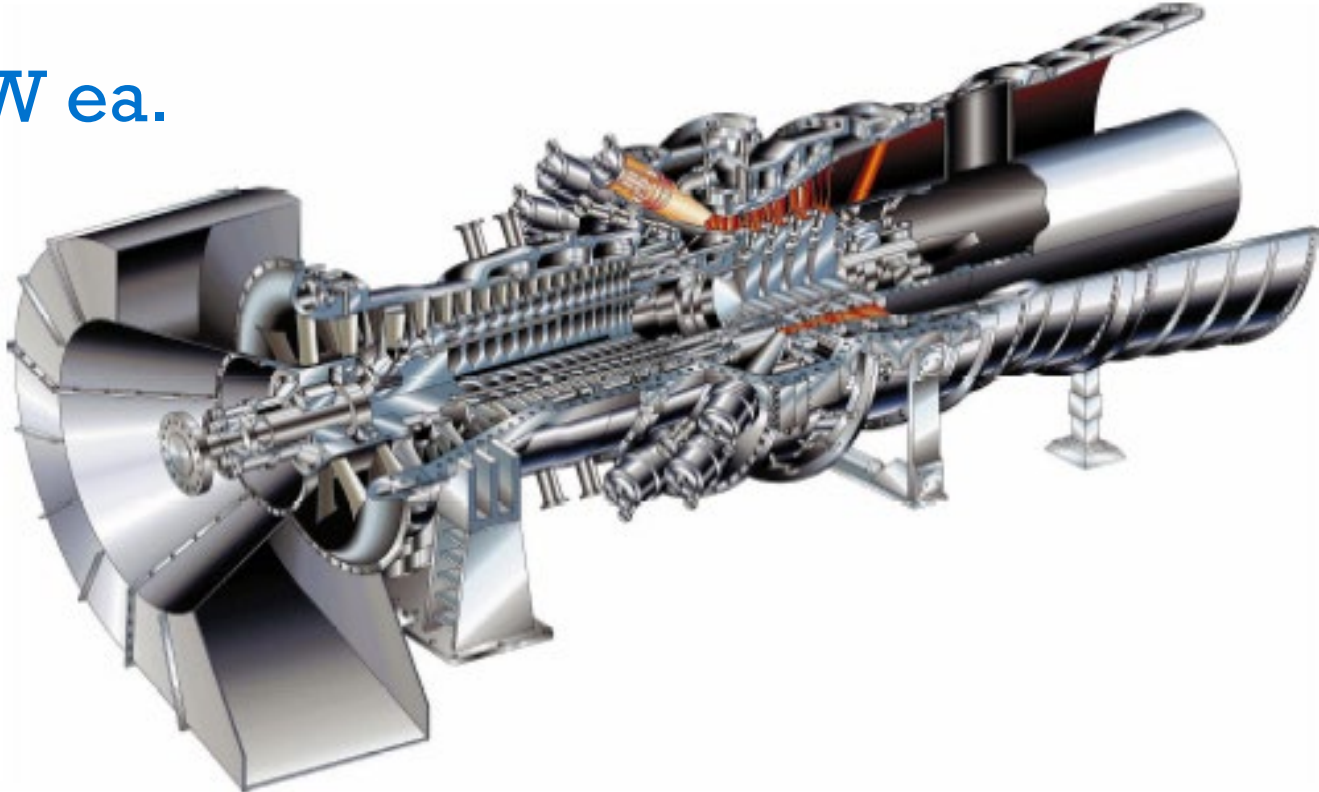
**GT Inlet Chillers**

**HRSG Duct Burners**

# 3 Mitsubishi 501J Gas Turbines

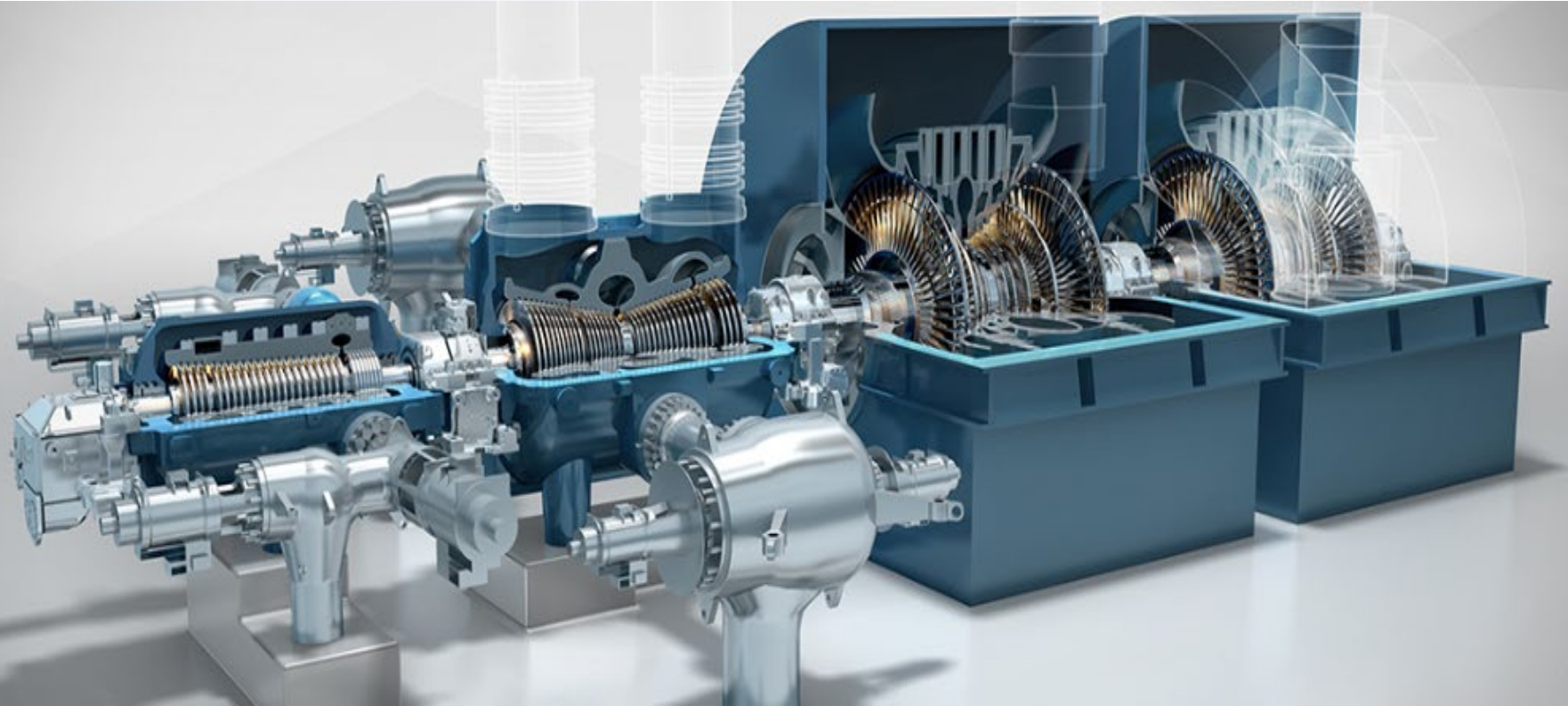
Natural Gas GT with Steam Cooled Combustors

365 MW ea.



# 1 Alstom/GE Steam Turbine

HP, IP, LP ACC - 680 MW



# GT Inlet Chillers

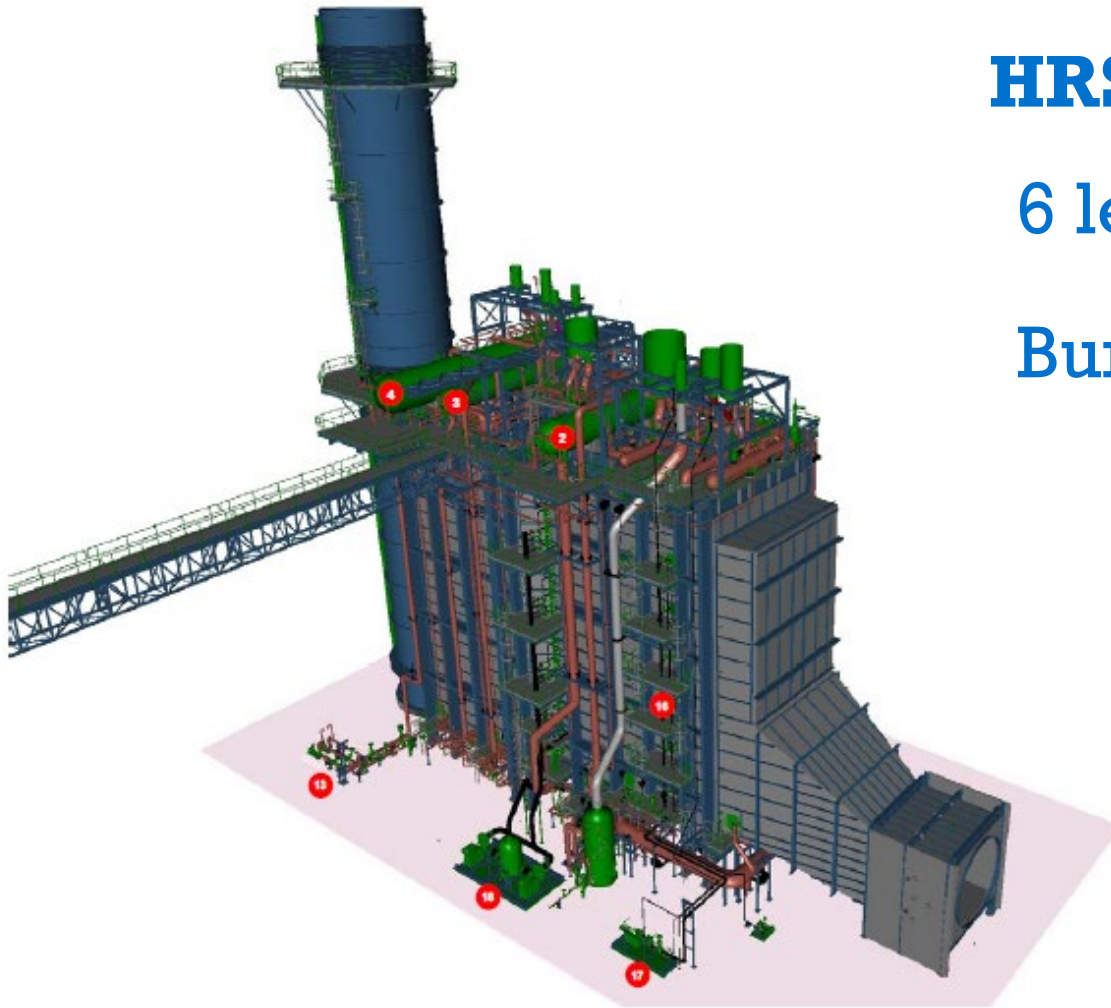
8 Trane Chillers, TES Tank, Inlet Coils – 150 MW



# HRSG Duct Burners

6 levels of Duct

Burners – 200 MW



# GCPS Tour Plan

- Arrive 9:00 Meet in white tent for safety talk, PPE disbursement, split into 3 teams
- Rotate through 3 “stations” ACC Deck, ACC Ground, Admin Conf. (30 Minutes at each)
- Regroup all in white tent 10:45
- Bus leaves by 11:00



# GCPS Tour Plan - Teams

- Team “Alpha” – ACC Deck, ACC Gnd, Admin
- Team “Bravo” – Admin, ACC Deck, ACC Gnd
- Team “Charlie” – ACC Gnd, Admin, ACC Deck

# GCPS Tour Plan – ACC Deck

- Gear Box, Motor
- Oil Change Project
- Cleaning System
- Fan assembly
- ?

# GCPS Tour Plan – ACC Ground

- Liquid Ring Vacuum Pumps
- Steam Jet Air Ejectors
- Drain Pot
- Condensate Receiver Tank
- ?

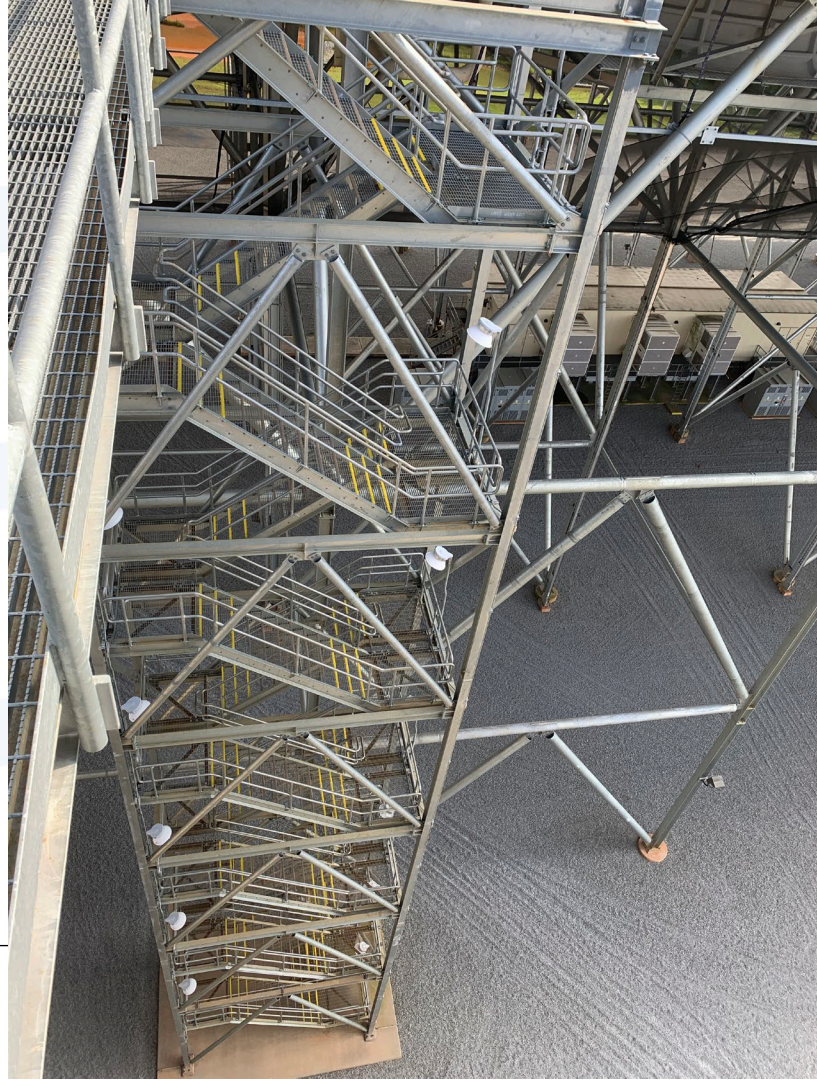
# GCPS Tour Plan – Admin Conf.

- Control Graphics
- Control Logic
- Operator Trends
- Bio Break
- ?

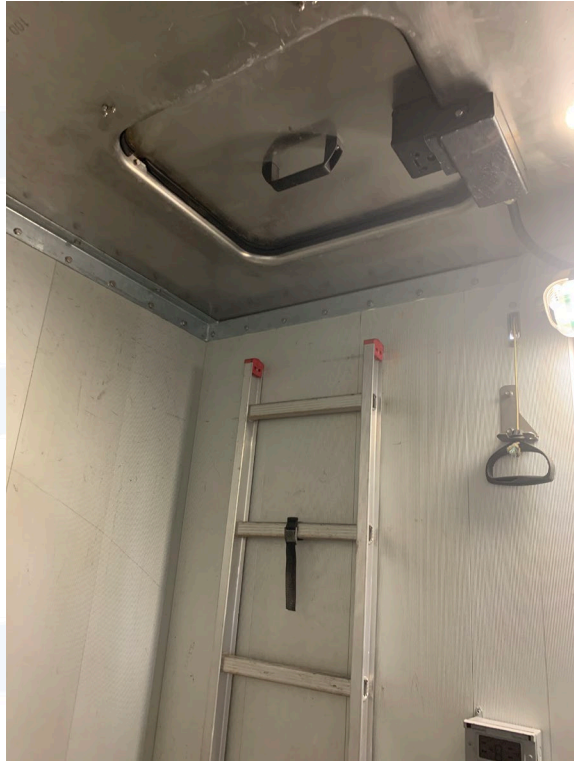
# GCPS Tour – Are you sure?



# GCPS Tour – Are you sure?



# GCPS Tour – Are you sure?



# Questions?

Jeff Petrillo

[jeffrey.t.petrillo@dominionenergy.com](mailto:jeffrey.t.petrillo@dominionenergy.com)